

XL5800

X-Ray Inline Inspection Equipment

XL5800 is an inline X-ray automatic inspection device equipped with an innovative self-developed AI intelligent Inspection algorithm. It has functions such as inline automatic feeding, automatic Inspection, automatic sorting, and marking of defective products. It occupies a small space and is suitable for fully automatic inline inspection of coils and discs and automatic feeding of production lines, realizing intelligent and automated product inspection.

Product Features

Miniaturization of Equipment: Small footprint, easy to place and use

Intelligent Automatic Inspection: Equipped with innovative self-developed AI intelligent Inspection algorithm [customizable according to user needs]

Equipment Compatibility: Supports 7-17 inches, 8-80mm wide coils, track width is automatically adjustable

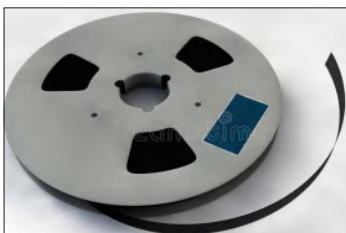
Fully Automatic Inline Inspection: Equipment automatically detects inline, automatically sorts defective products and marks them



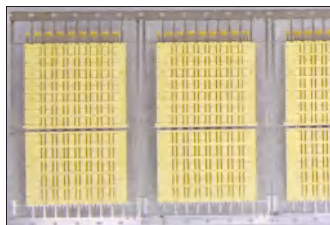
Application Cases



Transistor Inline Inspection



IC Inline Inspection



Connector Inline Inspection

Product Parameters

Model No.		XL5800
X-Ray Tube	X-Ray Tube Type	Reflective sealed micro-focus X-ray source
	Tube Voltage	0-90KV
	Tube Current	0-200μA
	Maximum Output Power	8W
	Micro Focus Size	10μm
Flat Panel Detector	Flat Panel Type	Amorphous Silicon Flat Panel Detector
	Pixel Matrix	1536x1536
	Field of View	130mmx130mm
	Resolution	5.5Lp/mm
	Image Frame Rate (1x1)	20fps
Equipment Specifications	Input Power	220V 10A/110V 15A 50-60Hz
	Operation System	Industrial Computer Win10 64 bits
	Inspection Sample Width Range	8-80mm
	Dimensions	L2940mmxW1100mmxH1970mm
	Net Weight	1210KG