

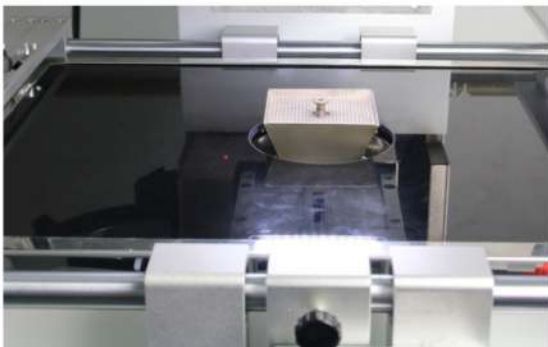
R720A

Optical Alignment Rework Equipment

Rework of precise micro component(0201)

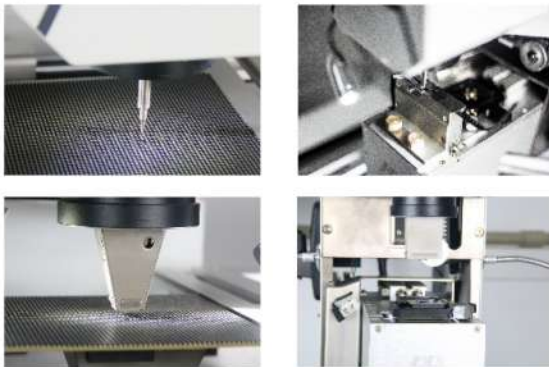
Carbon Fiber Infrared Heating Tube

The IR preheating zone uses carbon fiber infrared tube heating and high temperature resistant microcrystalline panel protection, and a multi-functional movable PCB fixing bracket.



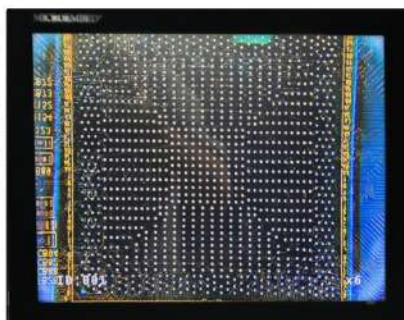
Precision Tiny Devices and Automatic Feeding

Dedicated to the repair equipment of precision micro component, automatic feeding device, optional LED feeder feeding fixture.



High Definition Display

Using imported high-definition CCD (2M pixels) digital imaging system with automatic optical zoom, automatic control laser red-dot precision alignment, using 15" HD industrial display screen.



Specifications

Model	R720A
Power Supply	AC220V±10% 50/60Hz
Power	Power 6.15KW(Max) Top heater(1.45KW) Bottom heater(1.2KW) IR Preheater(3.2KW) Other(0.2KW)
PCB Size	412×370mm(Max) ; 6×6mm(Min)
BGA Chip Size	60×60mm(Max) ; 0.6×0.6mm(Min)
IR Temp. Zone Size	380×280mm
Temp. Sensor	1 PCS
Operation Method	7" HD touch screen
Control System	Autonomous heating control system V2(with software copyright)
Display System	15"HD industrial display(1080P 16:9)
Alignment System	2M pixels HD digital imaging system, automatic optical zoom with laser red-dot indicator
Vacuum adsorption	Automatic
Alignment Accuracy	±0.01mm
Temp. Control	K-type thermocouple closed-loop control with accuracy up to ±1°C
Feeding Device	Yes
Positioning	V-groove with universal fixture
Dimensions	L810×W635×H870mm
Weight	84.5KG